

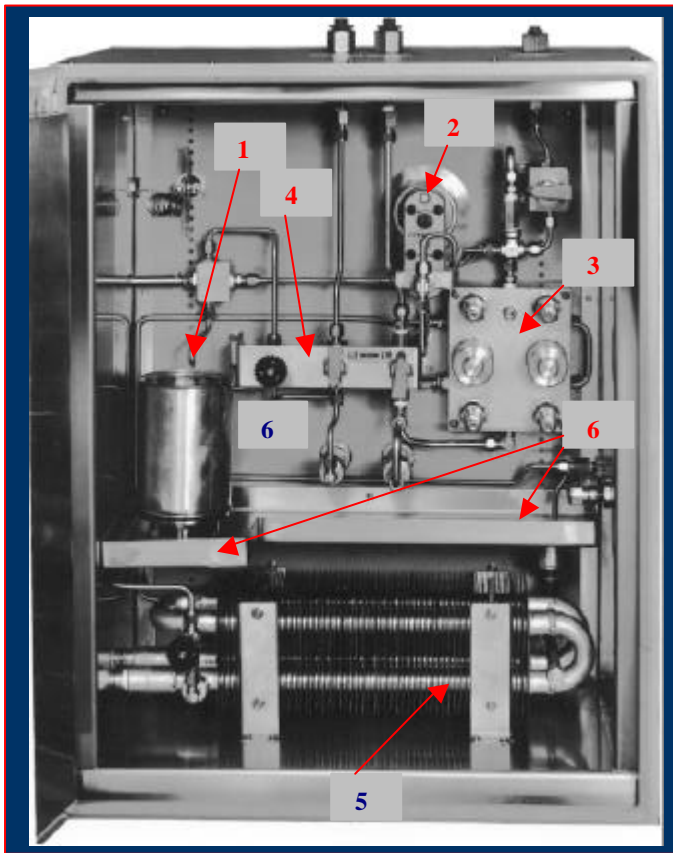
BITUMEN AUTOSAMPLER

ISOSAMPLE B10

PURPOSE:

Automatic collection at high temperature of refinery residual material such as Heavy Fuel-Oil; Bitumen, Long and Short Residue, Visbreaker and Coker Feed.

This system can be associated with the semi-automatic At Line FTIR AS 200 for Penetration Index or Softening Point prediction.



PRINCIPLE:

Continuous time proportional sampling in open receiver (1) at high temperature with automatic circuit flushing (4) at end of collection to avoid flow stagnation.

The time proportional sampling is processed by precision metering pump (2) constant speed driven. Sample filtration with associated maintenance is eliminated thanks to abrasion resistance of pump and to high electromagnetic field barrier (3) trapping steel particles eventually present in sample.

The sample maximum viscosity is over 10 000 cSt and a maximum temperature of 250°C is accepted.

The receiver capacitance is 1 to 5 liters as per user requirement and the sampling time is set according to the application .

All wetted parts are in 316L S.S. and the system is enclosed in S.S. cabinet with thermal insulation.

Usually the cabinet heating radiator (5) is steam supplied but electrical heater is available.

Disposal collectors (6) are provided for system cleanness with heated drain line.

When this autosampler is associated with the semi-automatic At Line FTIR AS 200 the receiver sampling is manually transferred to the analyser feeder.

SPECIFICATIONS:

Sample limits: maximum viscosity : 10 000 cSt ; maximum temperature: 250°C.

Power supply: 110/220 VAC- 50/60Hz- 300 VA

Air supply: 3 to 8 barg

Steam supply: low to high pressure specification.



8 Av. de Bretteville – 92 200 – NEUILLY sur SEINE – FRANCE

Tel : 33 (0)6 85 43 82 78 – Fax : 33 (0)6 07 18 28 07

e-mail : barere.opta@wanadoo.fr