

BLANKETING TANK CONTROLLER INERTANK

The INERTANK blanketing controller is used for protecting flammable liquid tank storage. The pressure in the vapour space of tank above of the stored liquid is controlled by inert gas (usually N₂) injection as necessary to maintain a non flammable atmosphere in the mixture vapour / N₂ .

The pressure range of INERTANK is adjustable between 5 and 40 mb with maximum flow-rate of 120 Sm³/h .

This material has been designed for use in all types and groups of hazardous areas.



PRESENTATION :

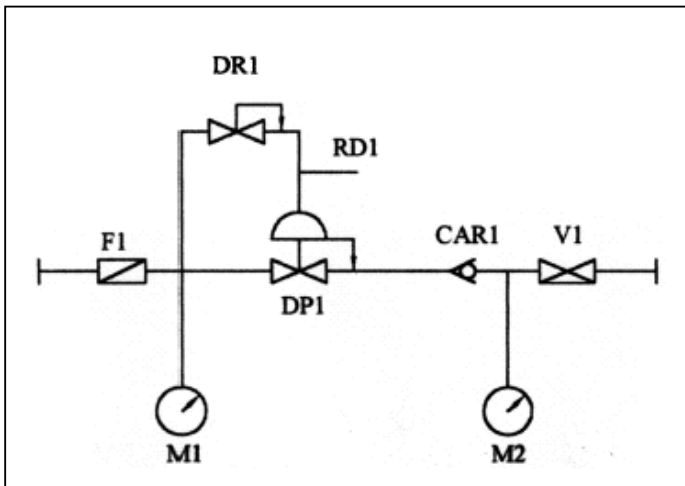
Box in steel beige painted sized : 500 x 500 x 300 mm

Mounting : 4 screws M8 – H : 460 mm – I : 520 mm

Connections inlet / outlet: Flanges DN25PN 50 RF - d = 820 mm

Readout: Gas supply pressure: 0- 4 bg – Pressure controlled: 0 – 40 mb

Set point adjustment: Pilot valve inside of box.



- F1 : Filter 5 μm
- DR1 : Pilot valve
- RD1 : Vent release
- DP1 : Pressure controller mb
- CAR1 : Non return valve
- V1 : Three-way valve
- Pressure gauge : 0-4 bg
- Pressure gauge : 0-40 mb

OPERATION :

The inert gas is filtered at 5 μm in the filter F1 and any content of water is drained-out by the auto-purge .

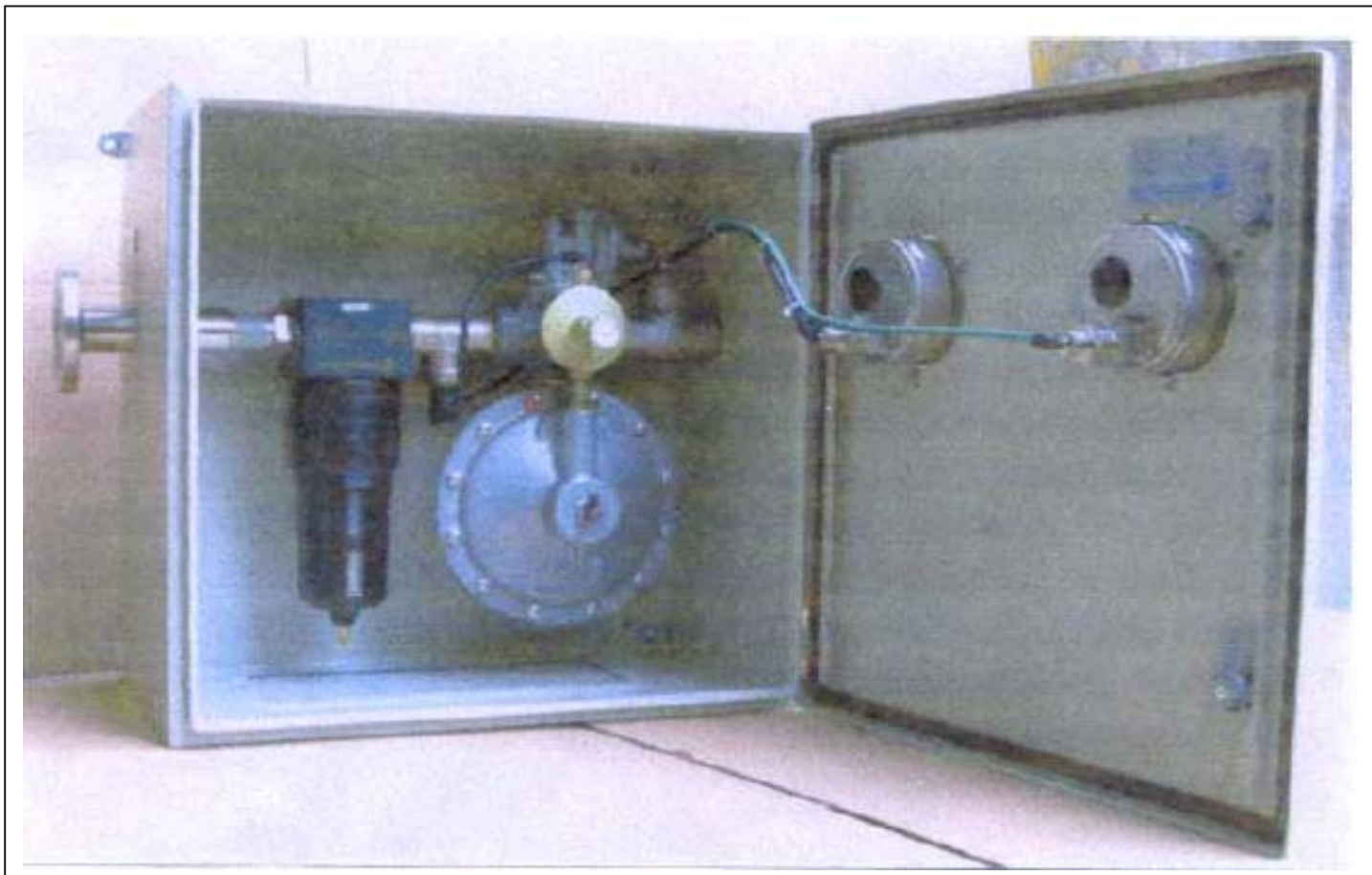
The pressure downstream of F1 is indicated in the gauge M1 .

The pressure regulator DP1 is a tied poppet principle , balanced with pneumatic pilot DR1 .

Set point adjustment is operated on DR1 and the vent release RD1 is factory adjusted for fine setting of pilot pressure .

The non-return valve CAR 1 is a full bore element in order to minimize pressure drop.

For this component to operate in good condition the INTERTANK box must be mounted horizontally.



PRESSURE RELIEF VALVES

The INTERTANK is not supplied in basic version with safety relief valve therefore it is essential to provide this component.

Two types of Pressure Relief Valves can be procured from our company: MDS2 & MDS3



MDS 2:

Connection: 2'' NPT

Relief pressure range: adjustable from 10 to 50 mbg

Pressure drop: 15 mb at 140 m³/h.



MDS 3 :

Connection : Flange PN10 DN 80

Relief pressure range: 10 to 50 mbg

Pressure drop: 5 mb at 140 m³/h

OPTIONS

CPM 4:

Checks that the tank pressure is above of a preset value, if pressure drops below this point a pneumatic (CPM 4-P) or electric (ex-proof) signal is switched.

DOS :

Detects the opening of Pressure Relief valves (MDS 2 or MDS 3 or any other type with switching of a pneumatic (CPM 4-P) or electric (ex-proof) signal .

OTHER SPECIFICATIONS

Depending on application , specifications can be changed :

- Type of connection inlet / outlet
- Pressure range
- Flow-rate range

ORTA-PERIPH

42, Av. Gavignot - 95230 Soisy sous Montmorency
FRANCE

Tel. : 33 (0)6 85 43 82 78 - Fax : 33 (0)6 07 18 28 07

0685438278